

District Process for Early College Credit and Start College Now Programs

If you need help during the application process, please call Teaching and Learning at 920-448-2076 or email agmanwiller@gbaps.org

APPLICATION PROCESS

STUDENT RESPONSIBILITY

Applications are submitted to school counselors.

SCHOOL COUNSELOR RESPONSIBILITY

Applications are reviewed with students. During review, counselors should make students aware of the policies on failure and repayment of failed courses.

Following review, applications are turned into the Secondary Teaching & Learning Department no later than the following due dates:

For Summer Enrollments

February 1st

For Fall Enrollments

March 1st

For Spring Enrollments

October 1st



STAGE 1

REVIEW & NOTIFICATION

THE REVIEW

Applications are reviewed by the Secondary Teaching and Learning Department. Students applications are approved or denied based on established criteria.

NOTIFICATION

Following approval or denial letters are sent prior to these dates:

For Summer Enrollments

March 15th

For Fall Enrollments

April 15th

For Spring Enrollment

November 15th



STAGE 2

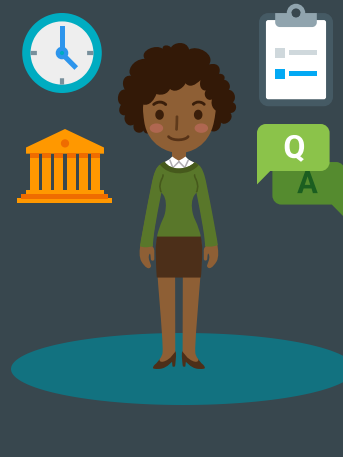
ENROLLMENT

STUDENT RESPONSIBILITY

Following approval students register with the post-secondary institution. Following denial (depending on circumstance) amended applications are accepted.

SCHOOL RESPONSIBILITY

Upon notification from Teaching and Learning, master scheduler creates courses in Infinite Campus. School Counselor enrolls student in course(s).



STAGE 3

COURSE COMPLETION

DISTRICT BILLING

Near completion of the enrolled course the district receives a bill. Payment is made to the respective post-secondary institution.

GRADE REPORTING AND FAILURE

The failure of a course that has been enrolled through either the Early College Credit or Start College Now Program must be repaid to the district. If the cost is not repaid, the student becomes ineligible to enroll in future Early College Credit or Start College Now courses, meaning any courses approved for the following semester will be unapproved and unenrolled.



STAGE 4

